



14 May 2026

Term 2 Week 4

**Kia Ora, Kamusta, Āyubōvan, Sata srī akāla, Namaskāra,
Hallā, Dia dhuit, Kam na mauri, Mālō e Lelei, Hello**

Kia Ora Parents and Whānau

Coming up next week we have John Parsons coming to share with students, staff and whānau about ways to keep ourselves and our children safe in this increasingly speedy digital world. The evening for parents will be from 6:00-7:30pm. The teachers have offered to run a disco for those families that would like to come along and need supervision for their children. The disco will be in the Hall and have a neon theme. See the information below.

Cross Country Information

Waimea Cross Country

Where: Hazeldine Road near Waikaia
When: **Friday 22nd May** - Postponement day 25th May
Time: 1:00pm sharp - departing from school 12.20pm

You must contact the bus driver if your child is off the bus in the afternoon.

On Friday 22nd May **all of our tamariki** will travel to Waikaia for the Waimea Schools Cross Country. The Cross Country is held at the properties of Clarke Horrell and Jeremy Gunton on Hazeldine Rd (off the Riversdale Waikaia Road - it will be sign posted). **We ask that parents please provide transport.** If you are unable to do this, please find a ride with someone else for your child/ren, and send a note to school advising us of who they will be going with. Please advise before 21st May if your child/ren require a ride.

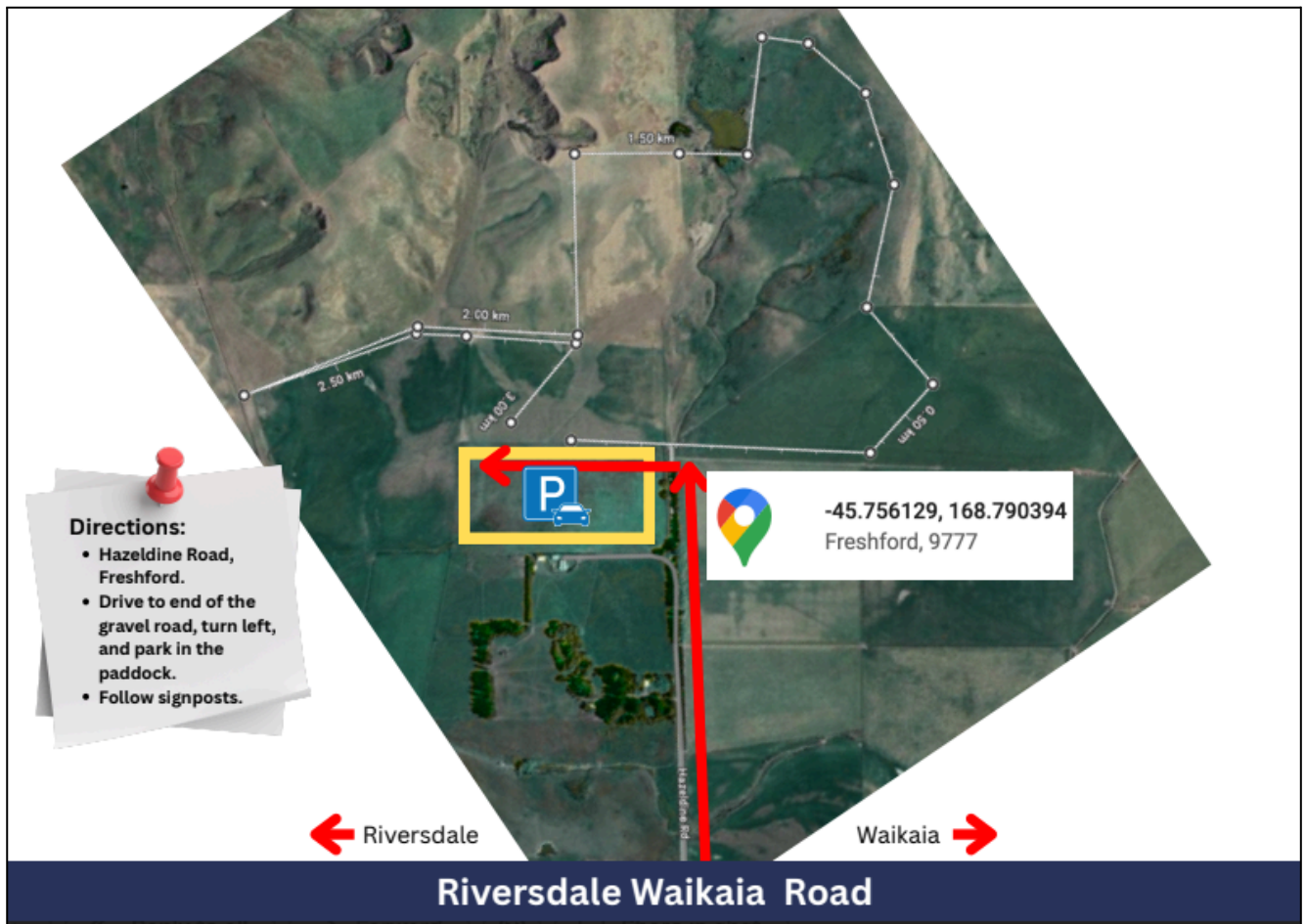
Please note this is a winter sports event. Please bring appropriate clothing and complete change of clothes for your child to change into at the end. All runners must wear gym shoes (no spikes or sprigs are allowed). School t-shirts will be given out. **If you still have a school t-shirt or tracksuit from sports last term, please return it to school immediately so we can reallocate for cross country - we are very low in t-shirts so we do need them all back please.** Please feel free to wear a black thermal underneath, and either black shorts or black trackpants. T-shirts will be given out on Tuesday or Wednesday.

Children run in their age group based on their age at the 31 December 2026.

Cross Country is not an optional event – every child displays our school vision and values by participating and doing their best.

Children come to school as normal, by bus or walking/biking. **We will depart from school at 12:20pm** to arrive at Waikaia by 12:45pm. Children will have an early lunch prior to leaving school. Please meet your child at the front or back school gate.

Directions to the Cross Country site



*Nga mihi,
Bronwyn and the Riversdale Staff*

**Ko te hoa tino pono rawa, ko tērā e toro atu ai tōnu ringa ki tōu,
engari ka titi kaha ki tōu manawa te kōhengihengi**

A true friend is someone who reaches for your hand but touches your heart

Kei te pai - Well done to our STARS OF THE WEEK!

You all displayed the school values so well.

Certificates from Term 2, Week 3



	STAR OF THE WEEK	Te Reo Māori Learner of the Week
Room 7	Cooper	Georgia
Room 6	Ivy	Jessie
Room 5	Harley	Remon
Room 4	Noah	Pippi
Room 3	Max	Myles
Room 2	Chayan	Maia
Room 1	Izzy	Hugo

Coming Up.....

Term 2

21 May	John Parsons visit (cyber safety) Parent meeting 6:00-7:30pm
21 May	School Disco 6:00-7:30pm
22 May	Waimea Cross Country at Waikaia
2 June	Teachers Only Day
3 June	Northern Cross Country at Waikaia
12 June	Southland Cross Country at Waimumu
25 June	Matariki Breakfast followed by Community Assembly
30 June & 2 July	Parent Teacher Conferences
3 July	Term 2 Ends

Term 3

20 July	Term 3 begins
---------	---------------

Child Protection, Cyber Safety Presentation

Empowering parents and adults working with young people.

Presented by: John Parsons
[Learn more about John Parsons](#)



Why Attend?

In today's digital world, young people face an increasing range of risks in their online activities.

Equip yourself with the tools to reduce these risks and confidently address issues when they arise.

Join us to learn how to reduce risks and maximise the benefits for your children.

What You'll Learn:

- **ONLINE SEXUAL PREDATORS:** Spotlight on Online Dangers. Understanding how predators operate on social media, online gaming platforms and mobile phones.
- **PORNOGRAPHY AND EXTREMISM:** Shielding from Inappropriate Content. Learn how to safeguard children and young people from harmful exposure.
- **CYBER BULLYING:** Tackling Internet-Based Abuse. Identify warning signs and know how to intervene.
- **Mobile Phones:** Excessive Screen Time. Learn about the risks, the signs, and strategies to reclaim balance.
- **SEXTORTION:** The Reality of Sextortion. How to protect against this growing world-wide threat.
- **THE IMPORTANCE OF SLEEP.** Why digital discipline is essential for mental and physical well-being.


Why This Matters

Risk factors and protective factors are identified: We look forward to seeing you at this important child protection presentation. If you cannot attend, please nominate another adult to represent your family. Together, through the school partnership children will flourish.

Event Details:

 **Date:** Thursday 21 May

 **Time:** 6pm

 **Location:** Room 5 Riversdale School

**Sponsored by the Rotary Club of Invercargill East
Charitable Trust**

GET READY TO GROOVE!

SCHOOL DISCO!

THURSDAY 21st MAY

TIME: 6:00PM - 7:30PM

SCHOOL HALL



ENTRY:

GOLD COIN

OPTIONAL:

\$5 GOODY BAG



TEACHER SUPERVISION AVAILABLE

PARENTS!
JOIN THE JOHN PARSONS EVENING
IN ROOM 5



Scholastic Lucky Book Club

Due to the school no longer dealing with cheques and cash for this, you will have to order online please. The books will still come to school and we will hand them out as before. Remember if you want them as a gift to indicate on the form and we will phone you when they arrive.



Parents, Caregivers and Whanau are invited to visit the SchoolDocs site to review our school policies for Term 2 2026. This term we are reviewing topics in *Safety On and Off School Grounds and Education Outside the Classroom*. Reviews are open to the Board, staff and school community (parents/caregivers/whanau)

To review policy documents:

1. Visit the website link: <https://riversdale.schooldocs.co.nz>
2. Enter the Username: *riversdale*
3. Enter the Password: *excellence*
4. Go to *Current Reviews* and click the links to read the policies currently under review
5. Click the *Policy Review* button at the top right hand of the page
6. Select reviewer type - "Parent"
7. Enter your name (Optional)
8. Submit your ratings and comments

These policies will be reviewed by the Board during their meeting on the 15th of June.

Term 2 policies	Review opens 20 April
• Daily School Bus*	
• School Swimming Pool*/ Swimming Off Site*	Board review
• Education Outside the Classroom (EOTC)	Board review
• EOTC Governance Roles and Responsibilities	
• EOTC Risk Assessment and Management	

To view any of our policies go to the above site and search for the appropriate policy

Pinecones For Sale

We still have heaps of bags of pinecones for sale. Winter is coming! If you would like to purchase pinecones, come on down and grab them from school. They are 1x bag for \$10 and 4x bags for \$35.

School Buses

Our four bus drivers are Jan Robertson, Michael Lobb, Rhonda Wilson and Paul Eason

Please inform the driver if your child is off the bus in the morning.

Jan Robertson – 027 6088203 (Kaweku - Yellow Bus)
Michael Lobb – 027 3725785 (Wendon - Green Bus)
Rhonda Wilson - 027 2578895 (Waipounamu - Blue Bus)
Paul Eason - 021474580 (Mandeville - Red Bus)

Please do not make any alternative arrangements with your child's bus driver without first checking with the school as our bus routes are set by the Ministry of Education and we are unable to go outside of our transport zone to drop students in different places. We are aware that some of our buses do travel past houses on the driver's way home, unfortunately this does not mean they are able to drop off students. If you have any questions please do not hesitate to be in touch with the school.

RIVERSDALE SCHOOL & COMMUNITY POOL

**RIVERSDALE
SCHOOL AND COMMUNITY
POOL**

POOL FUNDRAISER	
Food wrap	300m x 33cm = \$26
	600m X 33cm = \$36
Roll foil	90m x 44cm = \$23
	150m x 30cm = \$23
Baking Paper	100m X 30cm = \$32

Bank Account: 03-0915-0285905-00

Available from the school office. (new stock just arrived)



Community Notices

**THE SPARKS WITH
HALTON HART**

MAY 27 2026 | 6PM | ROADHOUSE SHED | RIVERSDALE



COUSINS
ON A COUNTRY MUSIC ADVENTURE
TOGETHER CELEBRATING SINGLES ON
NZ AN AUSTRALIAN COUNTRY RADIO!

YOUNG GUESTS
BRING A COSY BLANKET
FREE TEA & COFFEE

KIDS \$10 | ADULTS \$20 | BOOK AT iTICKET
ROADHOUSE SHED, 106 LIVERPOOL ST, RIVERSDALE

Presented by Award Winning Duo THE SPARKS

Proud to be part of  Tussock Country www.tussockcountry.nz

RIVERSDALE, BALFOUR, WAIKAIA & GORE

Community Projects Visit

Explore support opportunities for your community project with Community Trust South.

Wednesday 10 June
Call 0800 500 185 to book



clip'n climb. iLT STADIUM
SOUTHLAND

AFTER SCHOOL
CLIMBING
PROGRAMME

TURN TUESDAYS INTO
EMPOWERING
ADVENTURES!

Starts

26 MAY

Every Tuesday for 6 weeks

AGES 7 - 17

Beginner | 4:00pm - 5:00pm
Intermediate | 5:00pm - 6:00pm

\$80
per child



BUILD CONFIDENCE
AND RESILIENCE



IMPROVE STRENGTH,
BALANCE & COORDINATION



MAKE FRIENDS &
HAVE FUN



DEVELOP SKILLS
THAT LAST

Limited spots available

Enrol your child now
stadiumsouth.co.nz

